

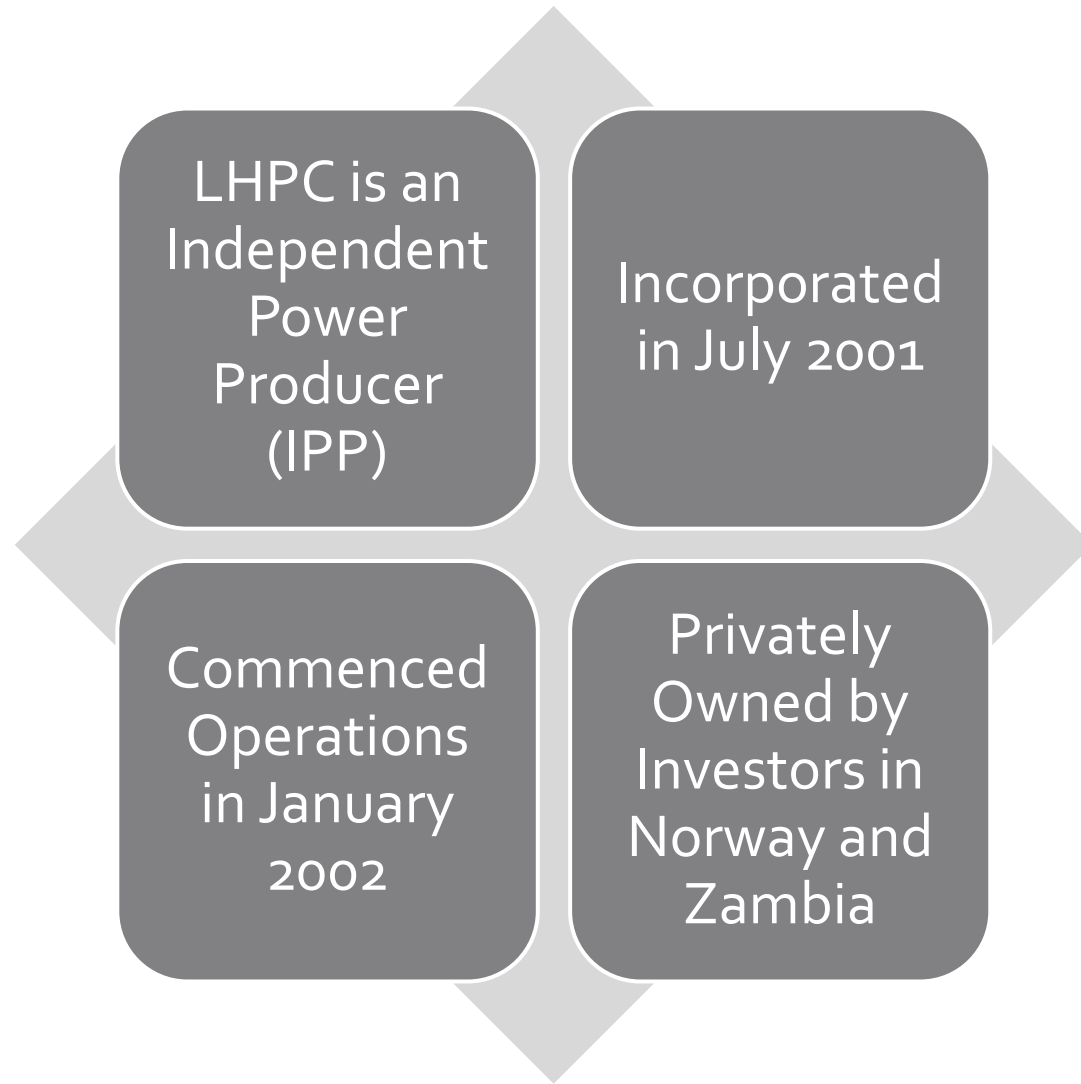
**LUNSEMFWA HYDRO
POWER COMPANY
LIMITED (LHPC)**



28 – 29 August 2023

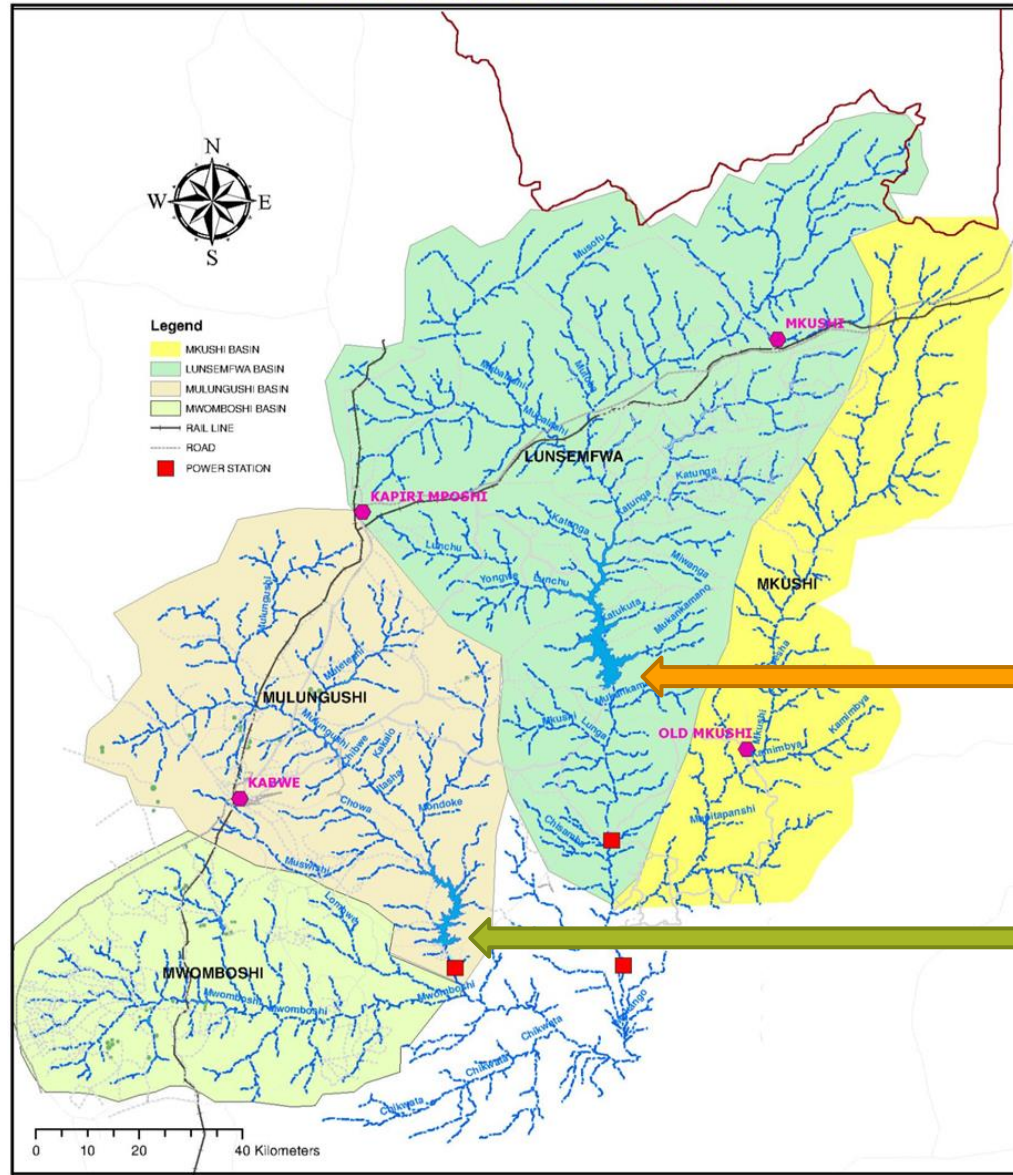
Venue : NAMIBIA

**MSB AND SAPP MARKET
ACCESS CONFERENCE**



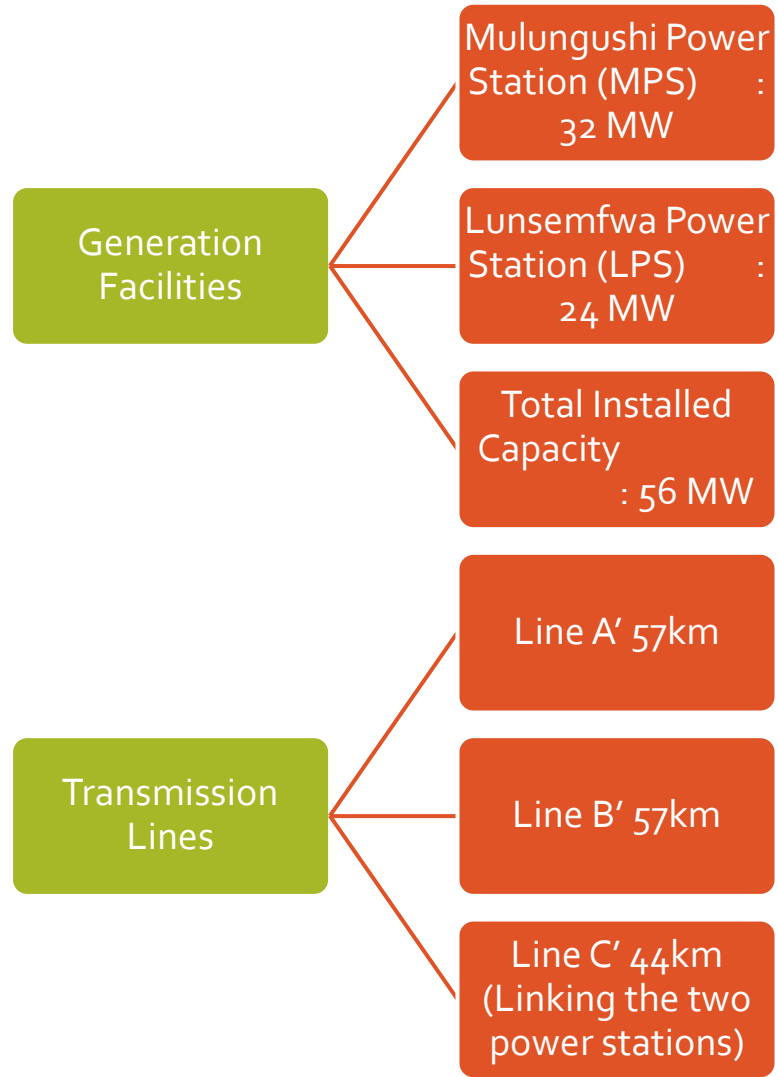
LHPC Overview

LUNSEMFWA RIVER BASINS



MITA HILLS
RESERVOIR

MULUNGUSHI
RESERVOIR



Company Key Assets

LHPC Customers

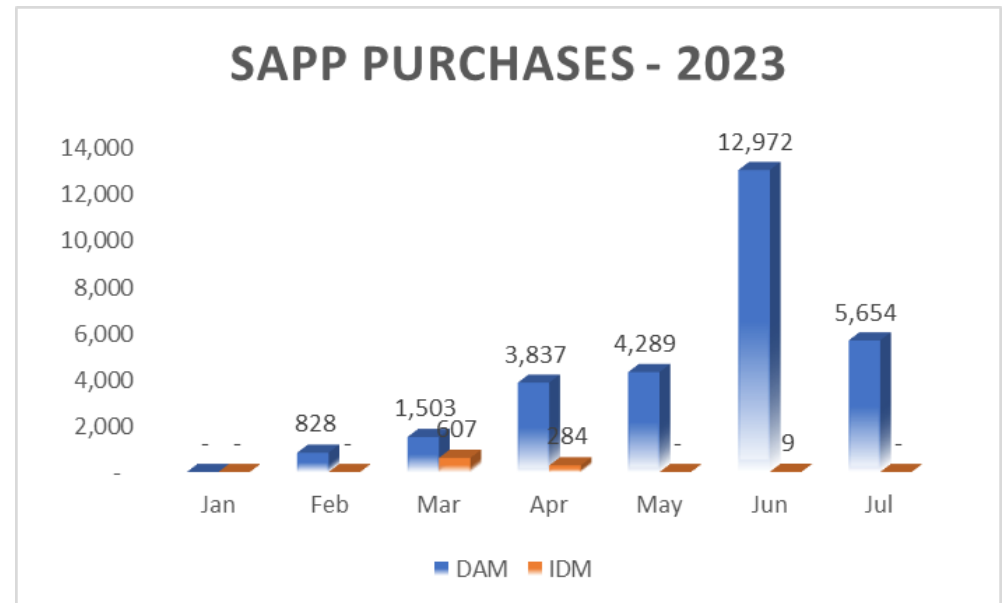
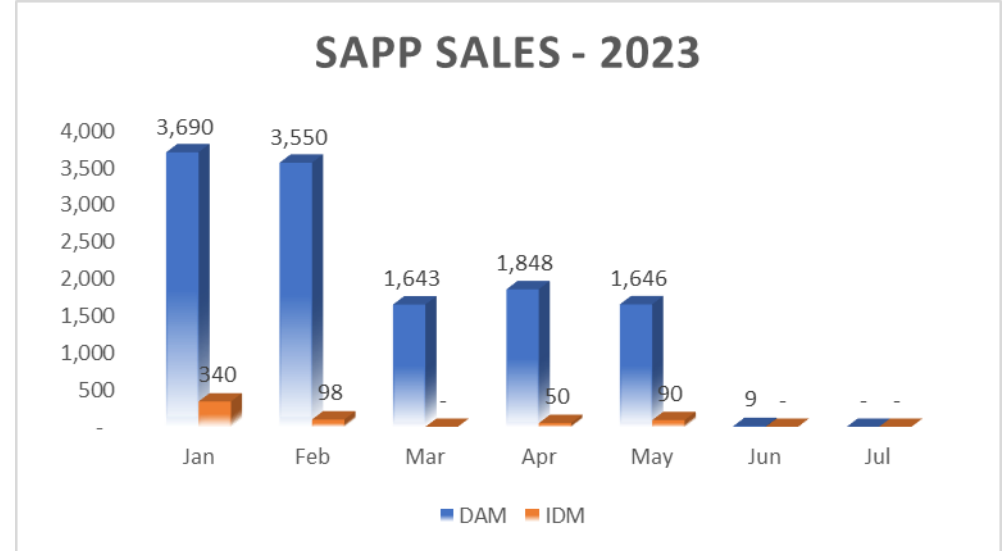
- LHPC has running contracts
 - ZESCO
 - CEC
- OTHER
 - SAPP Markets

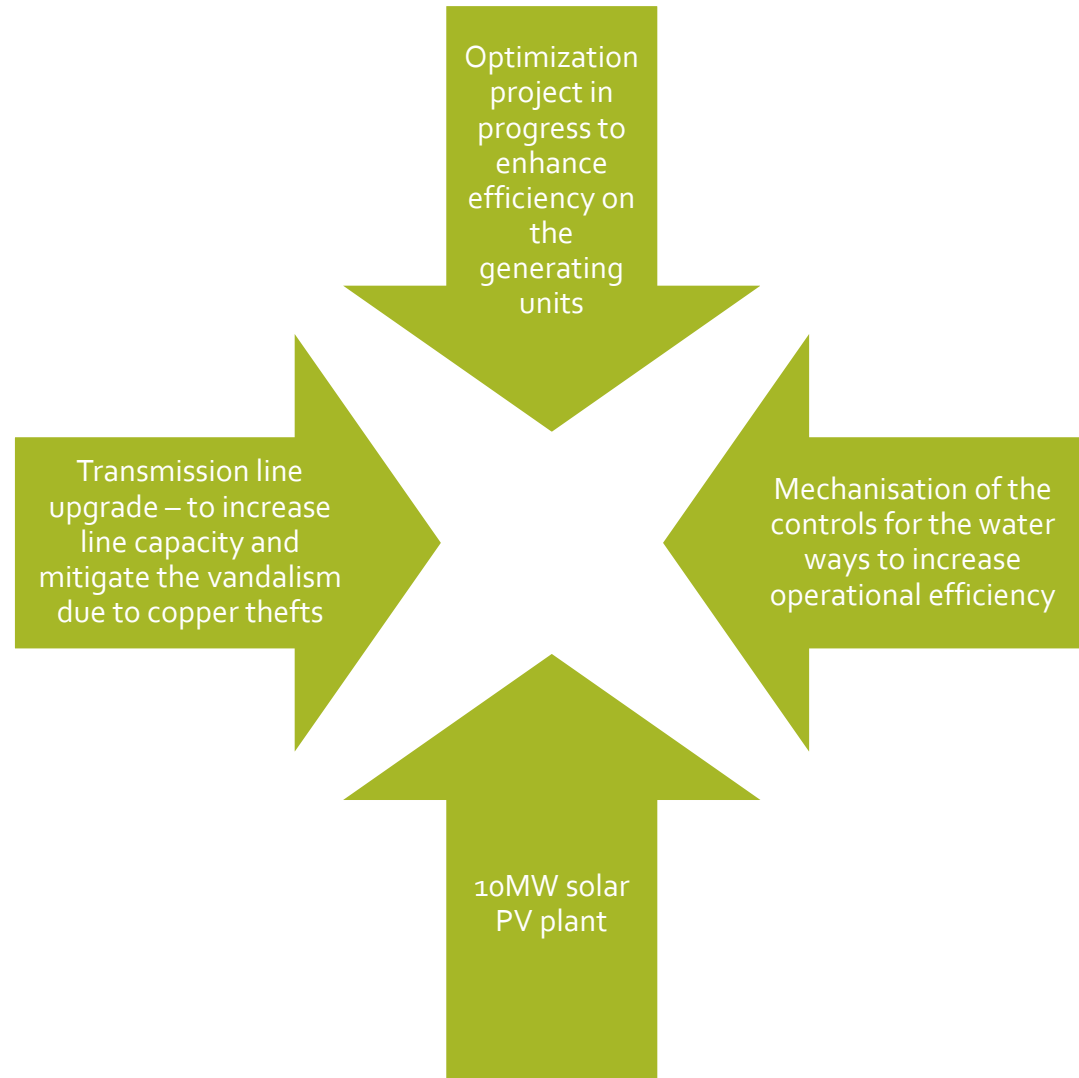
LHPC Power Trading 2023

- LHPC sold about 12.386 GWh on SAPP DAM
- LHPC sold about 0.68 GWh on SAPP IDM
- LHPC total sales on SAPP were 13GWh

- LHPC purchased about 29 GWh on SAPP DAM
- LHPC purchased about 0.899 GWh on SAPP IDM
- LHPC total purchases on SAPP were 30GWh

- There are no comparisons from last year because LHPC commenced its market participation in August 2022



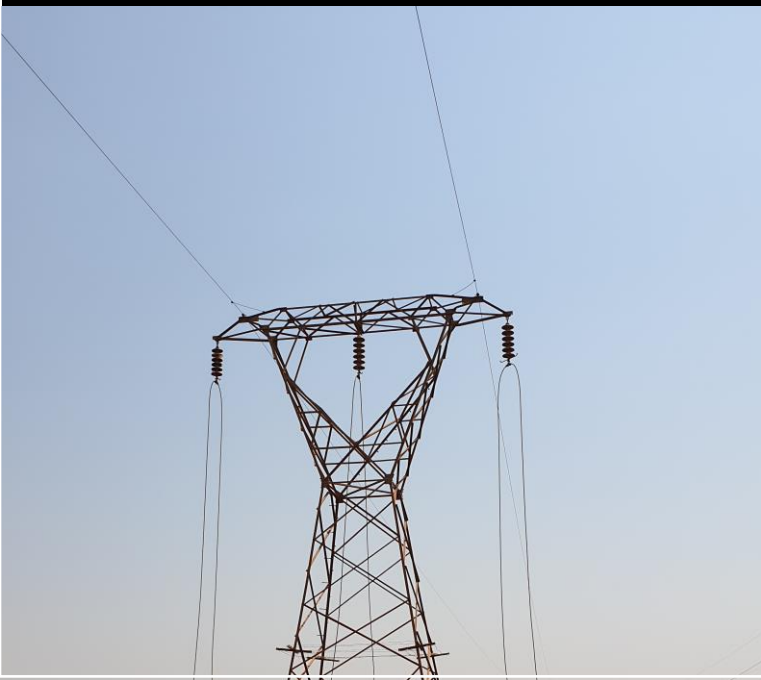


Projects

Opportunities

- LHPC is seeking term opportunities on the FPM such as the weekly and monthly
- LHPC is considering to exploit bilateral contracts within the SAPP





Challenges

Persistent poor hydrological performance in the region

Vandalism on transmission lines with Copper conductors

Limitation in the transmission capacity in the ZESCO network

Communication during outages



THANK YOU
