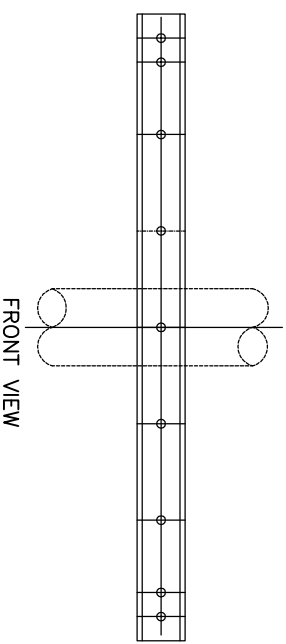
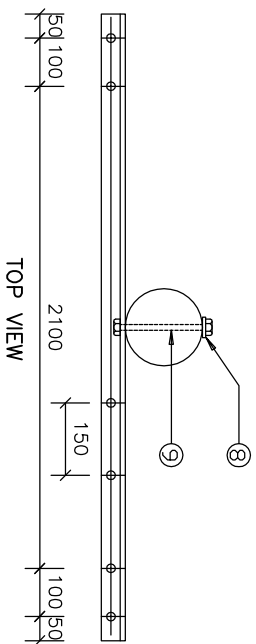
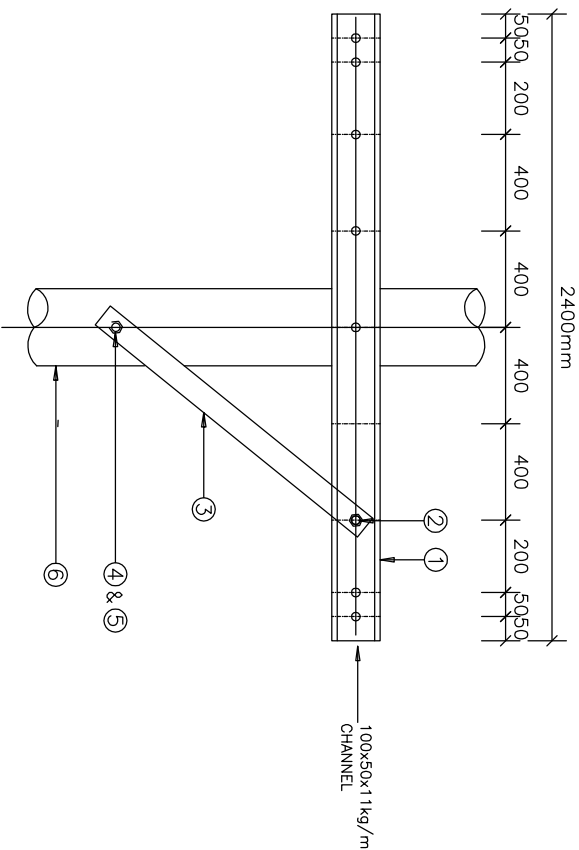


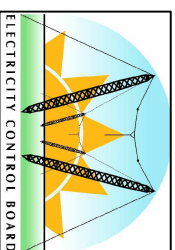
COPYRIGHT © 2009 EMCON
 ALL RIGHTS RESERVED. NO PART OF THIS PUBLICATION MAY
 BE REPRODUCED STORED IN A RETRIEVAL SYSTEM OR
 TRANSMITTED IN ANY FORM OR BY ANY MEANS, ELECTRONIC,
 ELECTROSTATIC, MAGNETIC TAPE, MECHANICAL, PHOTOCOPYING,
 RECORDING OR OTHERWISE, WITHOUT THE PERMISSION IN
 WRITING FROM EMCON.



ITEM	DESCRIPTION	QTY	REMARKS
1	CROSS-ARM	1	100x50x1kg/m CHANNEL
2	BOLT & NUT	1	60mm x M20 GALVANISED
3	BRACING STRIP	1	700x50x5mm FLAT BAR
4	COACH SCREW	1	100mm x M10 GALVANISED
5	FLAT WASHER	1	M12
6	WOODEN POLE	1	AS SPECIFIED
7	NEVA BRACKET	6	HA 421-00 'CULLINAN'
8	CURVED WASHER	1	60x60x6mm GALVANISED
9	BOLT & NUT	1	230mm x M20 GALVANISED

- NOTES:**
1. ALL MATERIALS SHALL BE GALVANISED MILD STEEL TO SABS 763.
 2. INSULATOR MATERIAL AND CREEPAGE TO IEC 60186,60273
 3. CREEPAGE 3mm/kV OF R.M.S. PHASE-PHASE VOLTAGE

ELECTRICITY CONTROL BOARD



Box 2923
 Windhoek
 NAMIBIA
 Tel: (061) 374300
 Fax: (061) 374305

DRAWING TITLE

MEDIUM VOLTAGE BARE OVERHEAD DISTRIBUTION CROSS-ARM DETAIL

DESIGNED: A.K	DRAWN: J.W.S	REV: 01-2001
DRAWING No: STD-MVA/F-33K-V-13	SCALE: N.T.S	

ERROR: syntaxerror
OFFENDING COMMAND: --nostringval--

STACK:

/Title
()
/Subject
(D:20100127125528+02'00')
/ModDate
()
/Keywords
(PDFCreator Version 0.9.5)
/Creator
(D:20100127125528+02'00')
/CreationDate
(johnny)
/Author
-mark-