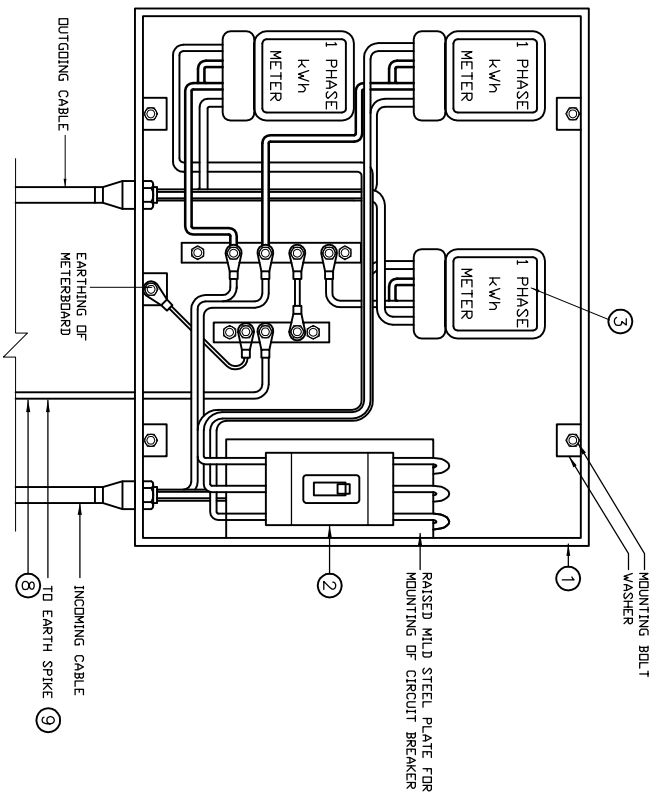


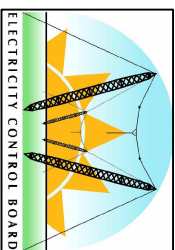
COPYRIGHT © 2009 EMCON
 ALL RIGHTS RESERVED. NO PART OF THIS PUBLICATION MAY BE REPRODUCED STORED IN A RETRIEVAL SYSTEM OR TRANSMITTED IN ANY FORM OR BY ANY MEANS, ELECTRONIC, MECHANICAL, PHOTOCOPYING, RECORDING OR OTHERWISE, WITHOUT THE PERMISSION IN WRITING FROM EMCON.



ITEM	DESCRIPTION	QTY	REMARKS
1	METERBOARD	1	MAX. DEMAND GEM TYPE
2	TRIPLE POLE MCB	1	SIZE AS REQUIRED C/W SHROUD
3	KWH METER	1	VECTRON TYPE C/VP - 3 PHASE
4	PVC INSULATED CONDUCTORS	-	SIZE AS REQUIRED
5	NEUTRAL BUSBAR (COPPER)	1	225x25x6mm C/W INSUL. MOUNT.
6	EARTH BUSBAR (COPPER)	1	225x25x6mm C/W INSUL. MOUNT.
7	TERMINATION LUGS	-	SIZE & QUANTITY AS REQUIRED
8	EARTH CONDUCTOR	17m	25mm ² BARE COPPER
9	EARTH SPIKE	1	1.2m LONG 16mm ² (NOT SHOWN)
10	LABELS ON COVER	-	WORKING AS REQUIRED

- NOTES:**
- FOR MOUNTING DETAILS REFER TO DRAWING STD-LVBO-24.
 - METERBOARD TO INCLUDE RAISED FLANGE, COVER AND HINGED DOOR. COVER IS NOT SHOWN HERE.
 - THE RATING OF THE LARGE FRAME CIRCUIT BREAKER SHALL BE AS INSTRUCTED.
 - CONDUCTOR SIZES USED IN METERBOARD SHALL COMPLY WITH BS.
 - THE CURRENT TRANSFORMERS (CT'S) TO BE INSTALLED SHALL BE AS INSTRUCTED.
 - THE CR RATIOS SHALL BE INDICATED ON THE METER ON A LABEL.
 - ALL BUSBARS SHALL BE SOLID COPPER INSTALLED ONTO INSULATORS.
 - ARRANGEMENT SHOWN ONLY FOR UP TO 70 mm² CONDUCTORS/CABLES.

ELECTRICITY CONTROL BOARD



Box 2923
 Windhoek
 NAMIBIA
 Tel: (061) 374300
 Fax: (061) 374305

DRAWING TITLE
 LOW VOLTAGE BARE OVERHEAD CONDUCTOR
 DISTRIBUTION,
 METERBOARD LAYOUT THREE PHASE
 CONSUMER (60A)

DESIGNED: A.K **DRAWN:** J.W.S **REV:** 01-2001
DRAWING No: STD-LVBOH-36 **SCALE:** N.T.S

ERROR: syntaxerror
OFFENDING COMMAND: --nostringval--

STACK:

/Title
()
/Subject
(D:20100127094524+02'00')
/ModDate
()
/Keywords
(PDFCreator Version 0.9.5)
/Creator
(D:20100127094524+02'00')
/CreationDate
(johnny)
/Author
-mark-